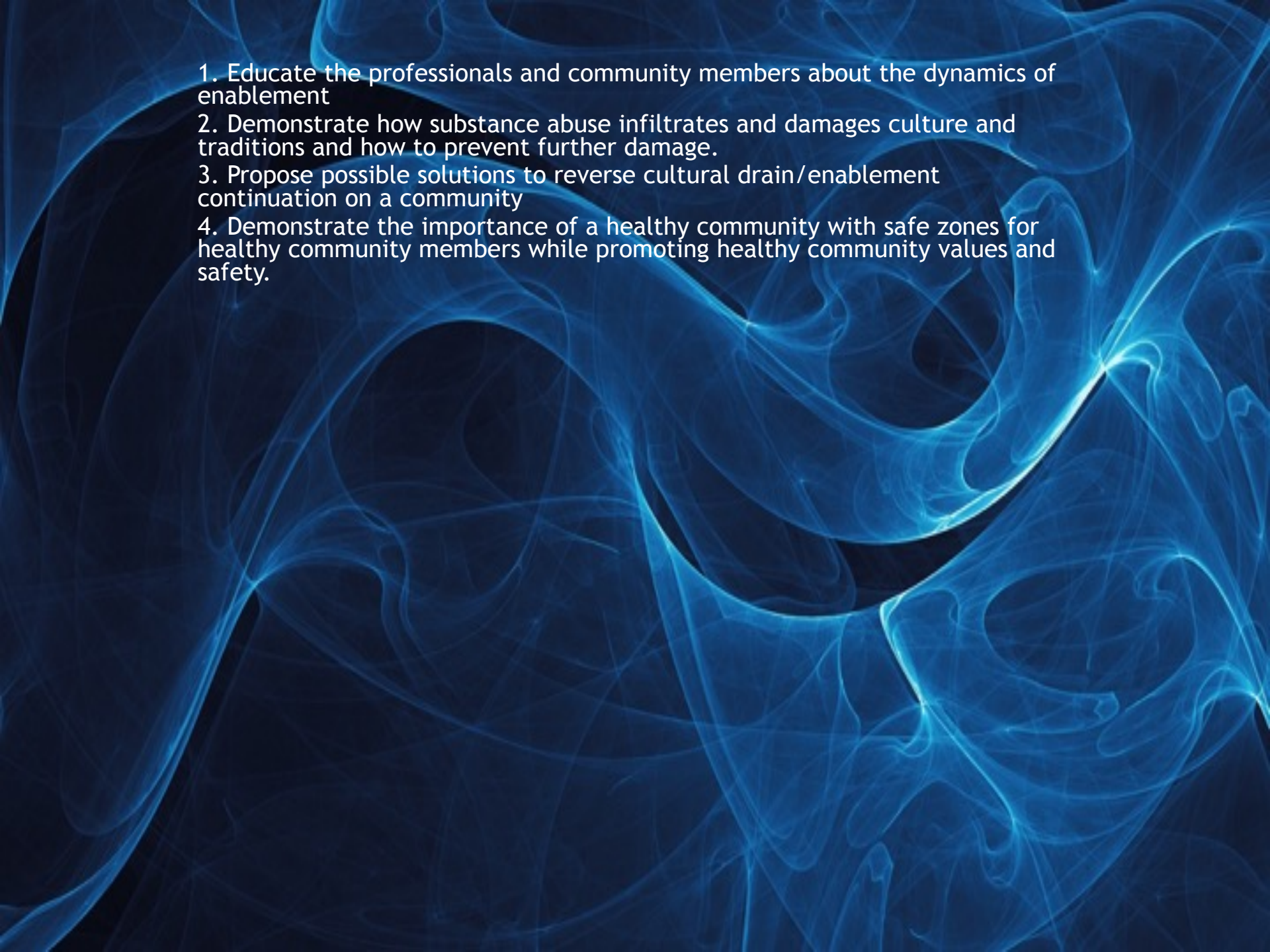


# Loving Families for Growth and

# Change



Presented by TLPI

- 
- The background of the slide features abstract, ethereal blue smoke or smoke-like patterns that swirl and flow across a dark, almost black background. The smoke is rendered in various shades of blue, from light, wispy clouds to more concentrated, glowing lines, creating a sense of movement and depth. The overall aesthetic is modern and somewhat mysterious.
1. Educate the professionals and community members about the dynamics of enablement
  2. Demonstrate how substance abuse infiltrates and damages culture and traditions and how to prevent further damage.
  3. Propose possible solutions to reverse cultural drain/enablement continuation on a community
  4. Demonstrate the importance of a healthy community with safe zones for healthy community members while promoting healthy community values and safety.

Have you ever felt like loving  
your family member just wasn't  
enough to help them.

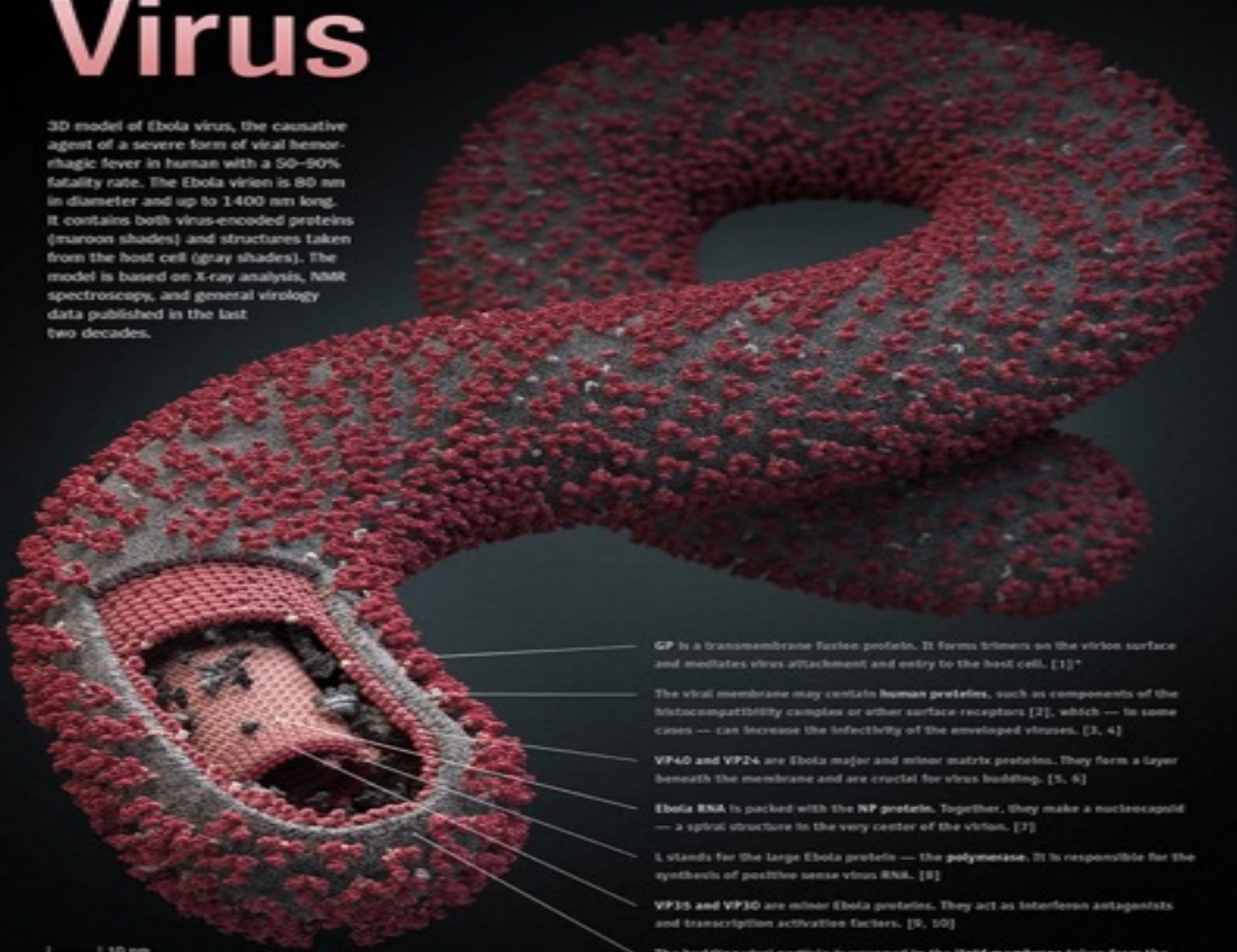


Hearts will never be practical until they  
are made unbreakable." - *Wizard of Oz*

# The Ebola Virus

VIRAL PARK  
Project of Visual Science

3D model of Ebola virus, the causative agent of a severe form of viral hemorrhagic fever in human with a 50–90% fatality rate. The Ebola virion is 80 nm in diameter and up to 1,400 nm long. It contains both virus-encoded proteins (maroon shades) and structures taken from the host cell (gray shades). The model is based on X-ray analysis, NMR spectroscopy, and general virology data published in the last two decades.



**GP** is a transmembrane fusión protein. It forms trimers on the virion surface and mediates virus attachment and entry to the host cell. [1]\*

The viral membrane may contain human proteins, such as components of the histocompatibility complex or other surface receptors [2], which — in some cases — can increase the infectivity of the enveloped viruses. [3, 4]

**VP40** and **VP24** are Ebola major and minor matrix proteins. They form a layer beneath the membrane and are crucial for virus budding. [5, 6]

**Ebola RNA** is packed with the **NP** proteins. Together, they make a nucleocapsid — a spiral structure in the very center of the virion. [7]

**L** stands for the large Ebola protein — the polymerase. It is responsible for the synthesis of positive sense virus RNA. [8]


**VP30** and **VP30** are minor Ebola proteins. They act as interferon antagonists and transcription activation factors. [9, 10]

The budding viral particle is wrapped in the lipid membrane taken from the human cell. [11]

10 nm

This model contains accurate models of 11 types of Ebola and human proteins, 18900 nucleotides of genomic RNA and more than 2.5 million lipid molecules.

\*For more information and references visit [www.visualsciencecompany.com/ebola](http://www.visualsciencecompany.com/ebola)

The background of the slide is an abstract, ethereal composition of swirling, translucent blue smoke or mist. The smoke forms intricate, organic patterns that flow across the dark, almost black background, creating a sense of movement and depth. The lightest parts of the smoke are a vibrant cyan, while the darker parts blend into the background.

Fever  
Severe headache  
Muscle pain  
Weakness



The background of the image is a dark blue, almost black, space filled with intricate, swirling patterns of lighter blue. These patterns resemble smoke, mist, or ethereal energy, creating a sense of movement and depth. The overall aesthetic is mysterious and somewhat ominous, fitting the subject matter of the text.

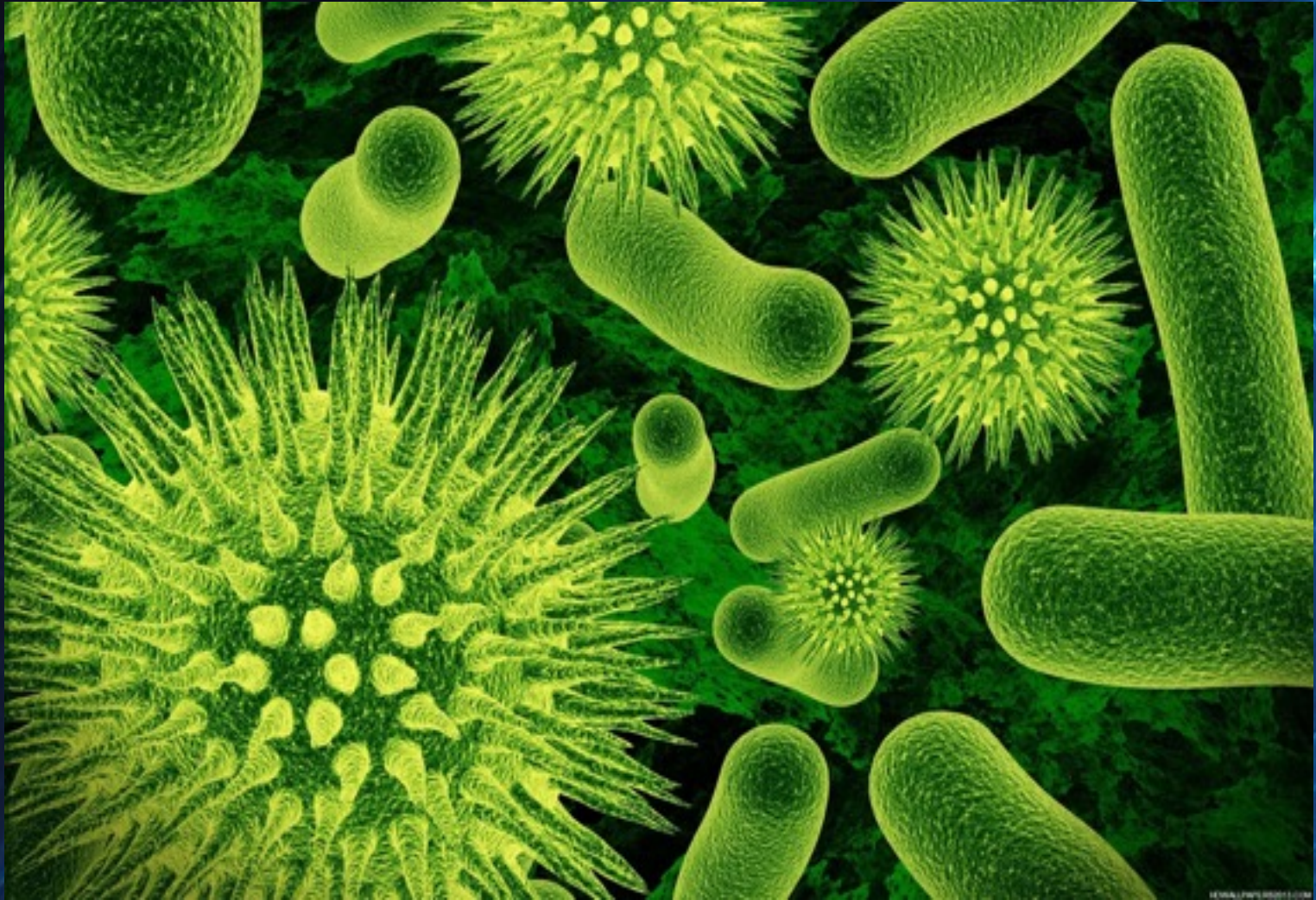
**OMG HOW MANY HAVE DIED FROM EBOLA IN THE  
USA**

**??????????**

So far, eight Ebola patients have been treated in the USA for Ebola Six became infected in West Africa: three doctors, three nurses, an NBC News cameraman and Thomas Eric Duncan, the first to arrive undiagnosed and the first to die. Eric Duncan was the ONE USA causality to EBOLA.



# LETS MAKE OUR OWN DISEASE



# FIRST LETS LIST OUR SYMPTOMS



# Some Suggestions.

Vomiting

Shakes/Tremors

Diarrhea

Headache

Bloodshot eyes

Inability to sleep

Excessive sleeping

Chronic pain

Deterioration of physical appearance

Unusual smells from body and breathe

Impaired Coordination

# 366 Billion Dollars



196 People Per Day





196 People a  
day



Love can help a loved one fight through a disease with support but it can't help cure it



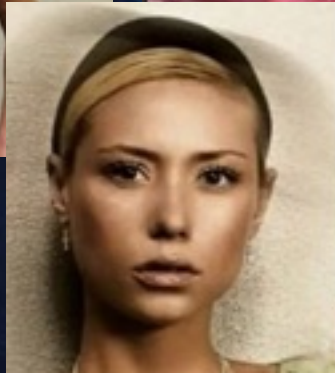
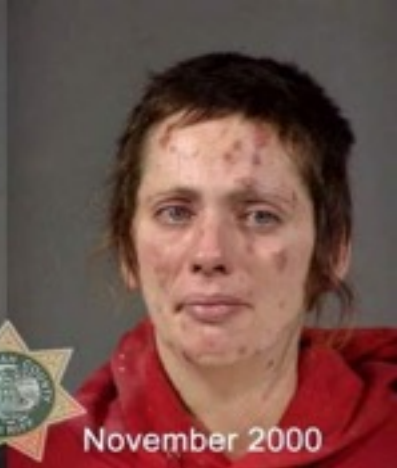
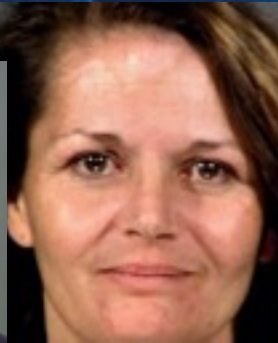
In fact this horrible disease will use your love to help to keep your family member / friend sick.



# Yes it is a disease







# Main Control Panel/Pleasure Center



An addict in active addiction does not see that there is a choice. It takes an intervention for the addict to realize that there is a choice.

Abstinence is the only way to start to make rational choices. This requires the drug has to be out of system.





When actively using the addict is not in control, the drugs are in control. The only thing your love is doing is allowing yourself to be victimized by the disease and allowing the disease to have a stronger hold on your loved one.



**Don't rescue the alcoholic or addict. Let him  
experience the full consequence of his or her  
disease**



**Very RARELY IS SOMEONE LOVED  
INTO RECOVERY**

# TREATMENT



The addict is powerless against the substance as long as the addict is actively using and stimulating the pleasure center of the brain.



**Avoid anger as anger leads eventually to pity  
and enablement**



**Don't financially support the addict or their addiction**



**Anything can become currency to a Substance Abuser**

**Only set boundaries you can keep. Don't make idle threats.**





# Don't accommodate the illness

## Dim and Dash BEING A HOUSEGUEST



Dim overstays his welcome.



Dash knows fish and visitors stink  
after three days.

Initiation into excessive substance use may occur during periods of rapid social change, often among cultural groups who have had little exposure to a drug and have not developed protective normative behavior.



This leads to trauma of a community system and a warping of traditional cultural values

Anomie, or loss of a healthy ethnic or cultural identity or a warping or blending of the substance abuse culture into the normal culture creating a type of Frankenculter.



A drug culture has its own history (pertaining to drug use) that is usually orally transmitted

It has certain shared values, beliefs, customs, and traditions, and it has its own rituals and behaviors that evolve over time.

Members of a drug culture often share similar ways of dressing, socialization patterns, language, and style of communication. Some even develop a social hierarchy that gives different status to different members of the culture based on their roles within that culture

People start to identify with the culture they are exposed to the most and start to identify more with a subculture more



So which culture is exposed more to the most  
those most vulnerable



# Must create safe environments for sobriety



Must treat this as SERIOUSLY as ANY OTHER  
DEADLY DISEASE

**CAUTION**



**BIOHAZARD**



Must have the entire system on board  
Community  
Family  
Must be a united front



# Abusers

A pattern of the following for 1 year or more:

Work/School performance are negatively affected.

Takes part in reckless behaviors.

Continued use even though it negatively impacts life, work or relationships.

Legal problems, financial problems, problems w/ law enforcement as a result of substance use.



# Addiction

Addiction is more severe than abuse.

Use leads to tolerance (one needs to use more substances to get the desired affect)

Being unable to stop once use starts. (One is too much and 1000 isn't enough)

Exceeding self-imposed limits (I'll only have one hit)

Spends excessive time getting or using drugs

Taking a drug despite deteriorating health

Binging  
Withdrawal  
Craving/Compulsion



Fine line or edge between addict and abuser.  
Once that line is crossed there is no going back.



# The Three “ENDS” of untreated addiction



# For More Information . . .

TLPI believes in providing resources free of charge, or at minimal cost, whenever possible.

**Visit [www.tlpi.org](http://www.tlpi.org)**

or

contact:

**Lauren Van Schilfgaarde,  
[lauren@tlpi.org](mailto:lauren@tlpi.org)**











